

Narrative Schwere

Owen Williams in Schottland und England

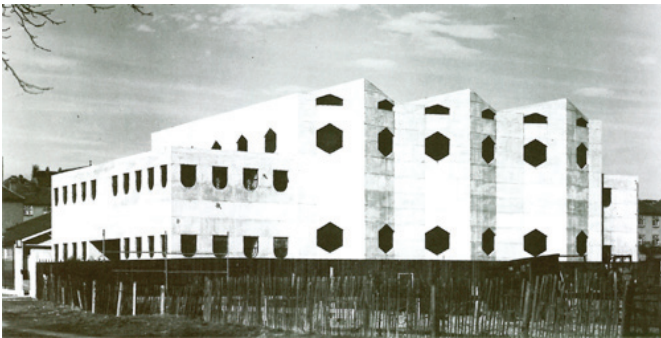
Beispielobjekte



Boots Factory, Nottingham, 1930



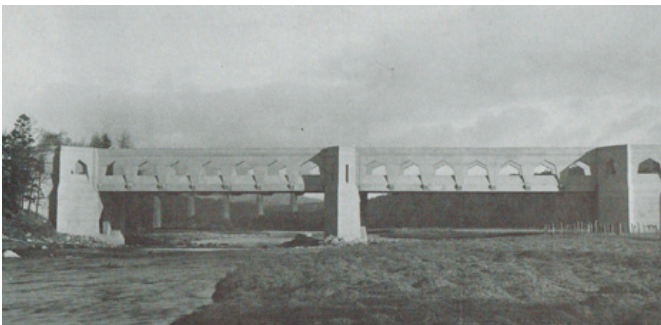
Daily Express Building, Manchester, 1939



Dollis Hill Synagogue, London, 1938



Empire Pool, London, 1934



Findhorn Bridge, Schottland, 1924



Spey Bridge, Schottland, 1926



Crubenmore Bridge, Schottland, 1926